

Introduction to Git, Trac and Sage development

Sage Days 75

David Lucas

Inria Saclay/LiX

2016/08/23

Outline

- 1 Git tutorial
- 2 Review tickets

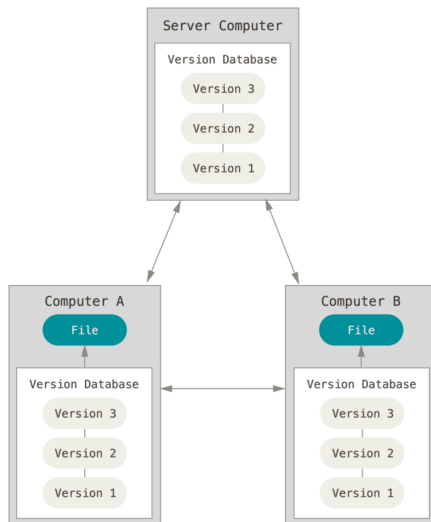
Outline

- 1 Git tutorial
- 2 Review tickets

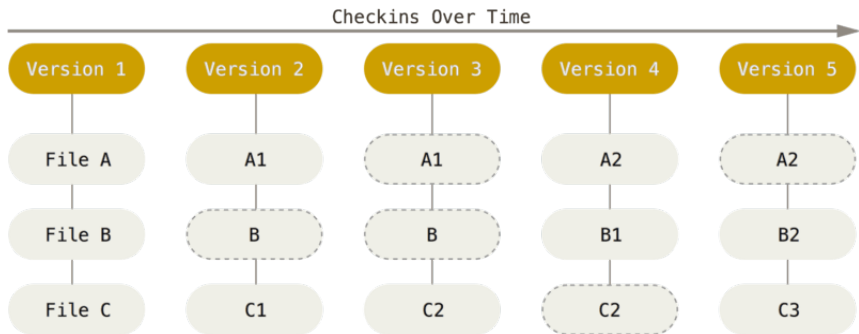
What's Git?

- Version control tool
- ⇒ Saves the state of your project
- ⇒ Allows to revert to a previous state
- ⇒ Makes collaborative development much easier

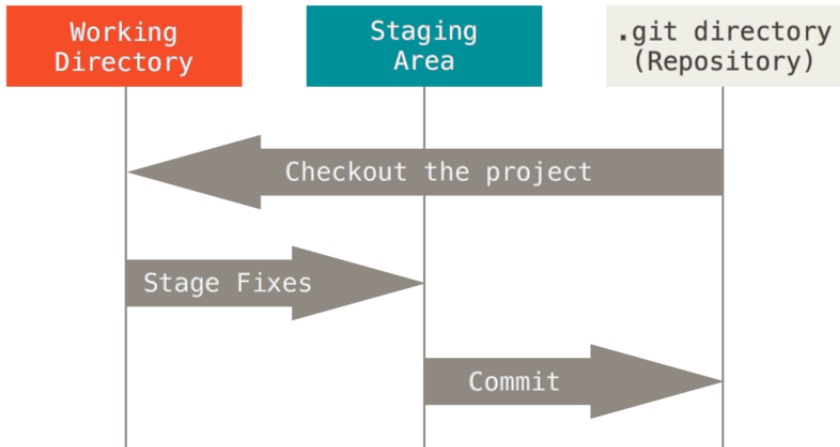
Distributed version control



Git basics: snapshots



Git basics: workflow



Git basics: configure Git

- `git config --global user.name <Your name>`
- `git config --global user.email <Your email>`
- `git config --list`

Getting started

- `git init`: starts git in a folder
- `git add <file>`
- `git commit`
- `git rm <file>`

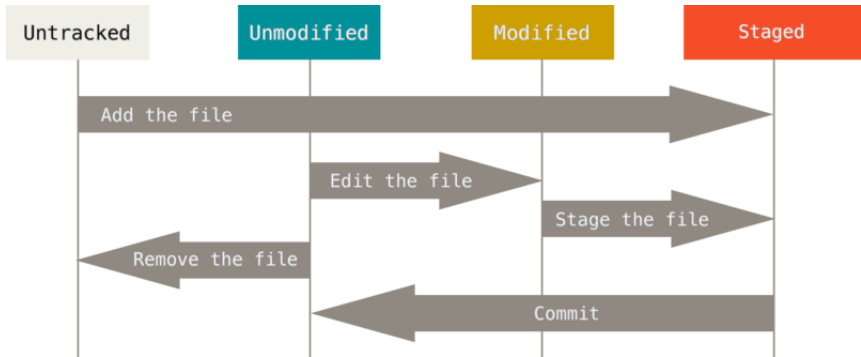
Git commits



| | COMMENT | DATE |
|---|------------------------------------|--------------|
| ○ | CREATED MAIN LOOP & TIMING CONTROL | 14 HOURS AGO |
| ○ | ENABLED CONFIG FILE PARSING | 9 HOURS AGO |
| ○ | MISC. BUGFIXES | 5 HOURS AGO |
| ○ | CODE ADDITIONS/EDITS | 4 HOURS AGO |
| ○ | MORE CODE | 4 HOURS AGO |
| ○ | HERE HAVE CODE. | 4 HOURS AGO |
| ○ | AAAAAAA | 3 HOURS AGO |
| ○ | ADKFJSLKDFJSDKLFJ | 3 HOURS AGO |
| ○ | MY HANDS ARE TYPING WORDS | 2 HOURS AGO |
| ○ | HAAAAAAAAANDS | 2 HOURS AGO |

AS A PROJECT DRAGS ON, MY GIT COMMIT MESSAGES GET LESS AND LESS INFORMATIVE.

Git basics: workflow



Check stuff

- `git status`
- `git log`

Fixing stuff

- `git commit --amend`
- `git reset <file>`

Advanced behaviour: branches

- `git branch`
- `git branch checkout`
- `git branch -b`
- `git merge`

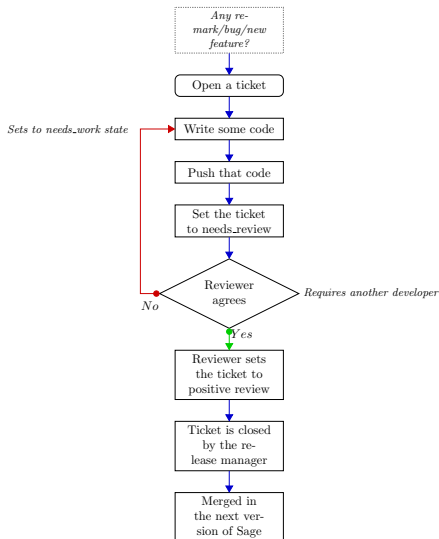
Outline

- 1 Git tutorial
- 2 Review tickets

First step: setup your remotes

- Get a trac account
- Upload you ssh keys to trac
- Setup your remotes
- (Install git-trac command)
- (Configure git-trac. WARNING: passwords are stored in a plain text file)
- `git trac`

Sage workflow



Trac tickets

- Guidelines for tickets

Write some code for a ticket

- Be sure you use the latest beta version of Sage
- (live example)

Review a ticket

- Reviewer's checklist
- Useful commands:
 - `./sage -t <file or folder>`
 - `./sage --coverage`
 - `./sage --docbuild <path to doc> [html|pdf]`
 - If you made some changes, don't forget to recompile: `./sage -b`

A few more useful links

- [Sage development mailing list](#)
- [Sage release mailing list](#)